

Kreations

Design & Decoration

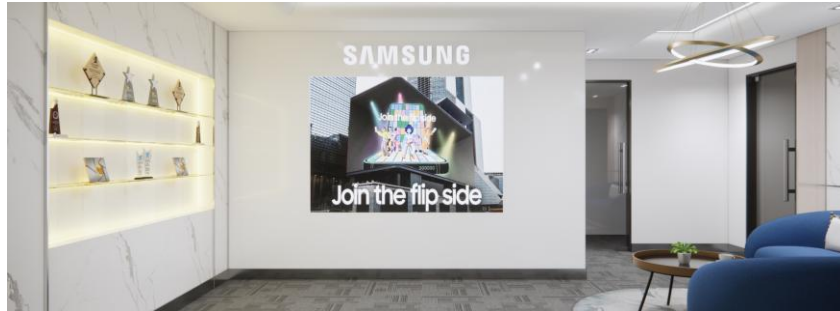
Portfolio

2023- 2026



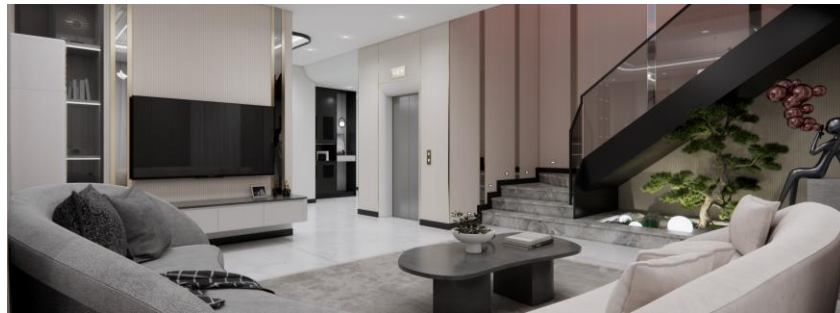


CONTENTS



1. About Our Company
2. Our Design Philosophy
3. Services We Provide
4. Highlighted Projects Showcase
 - project title
 - project overview
 - design images
5. Technical Section
6. Contact Page

1. ABOUT US



About Kreations

Kreations Design & Decoration is a professional interior design studio established in 2023.

In 2024, we contributed expertise in decoration and construction works, strengthening the company's structure and expanding its future vision.

We are dedicated to transforming spaces into elegant, functional, and meaningful environments. Our expertise covers:

- Residential homes
- Condominiums
- Offices
- Commercial interiors

With a strong commitment to client satisfaction, we blend modern aesthetics with practical solutions to create spaces that reflect each client's lifestyle, brand identity, and comfort.

At Kreations, we believe great design is not only about beauty — it is about creating spaces that inspire, function efficiently, and feel truly personal.

2. DESIGN PHILOSOPHY

Our Design Philosophy

At Kreation, we believe:

- Good design improves quality of life
- Functionality must meet aesthetics
- Every space should tell a story
- Details create luxury

Our design style blends:

Modern • Minimal • Contemporary • Scandinavian influences



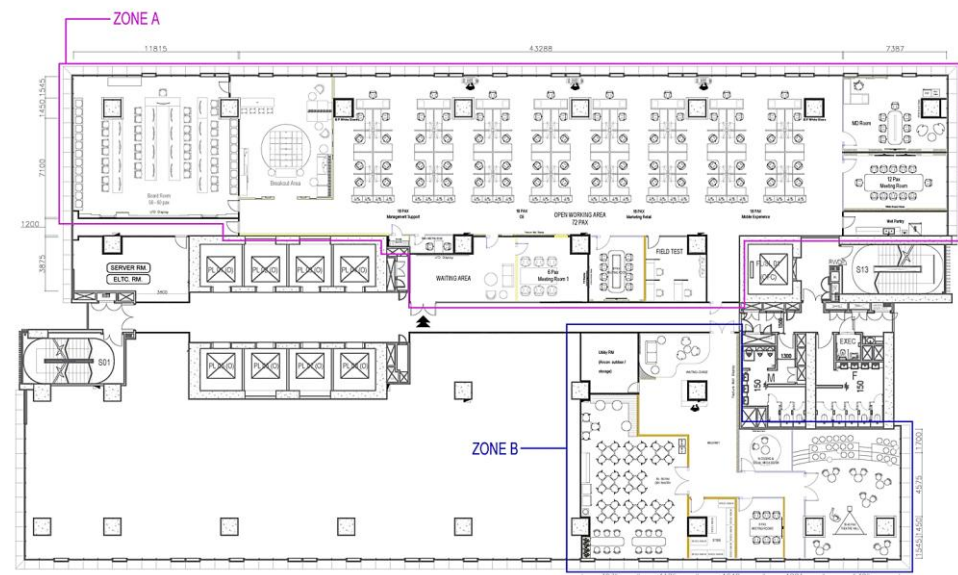
3. SERVICES WE PROVIDE

Our Services

- ✓ Interior Design Concept Development
- ✓ 3D Visualization & Rendering
- ✓ Space Planning
- ✓ Renovation & Decoration
- ✓ Construction & Demolition
- ✓ Custom Furniture Design
- ✓ Project Management



4. PROJECTS SHOWCASE



Project Title

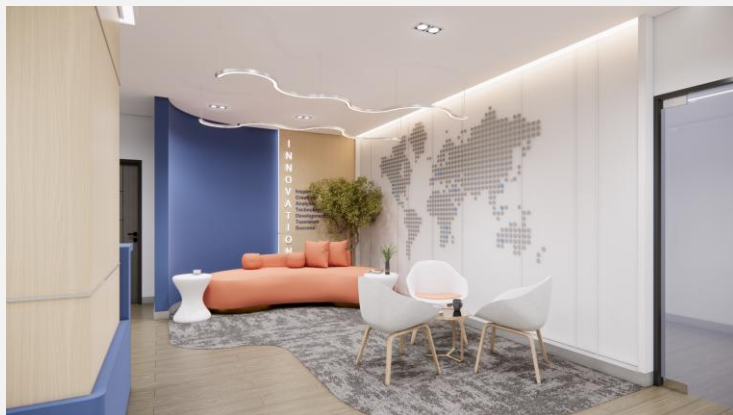
- Project Name - Samsung Office Renovation
- Location - Junction City 19th Floor, Yangon.
- Project Type - Office (Commercial Interior Design)
- Size (sqft) - 11627.6 Sqft
- Completion Year - 2026

PROJECTS SHOWCASE



Project Overview

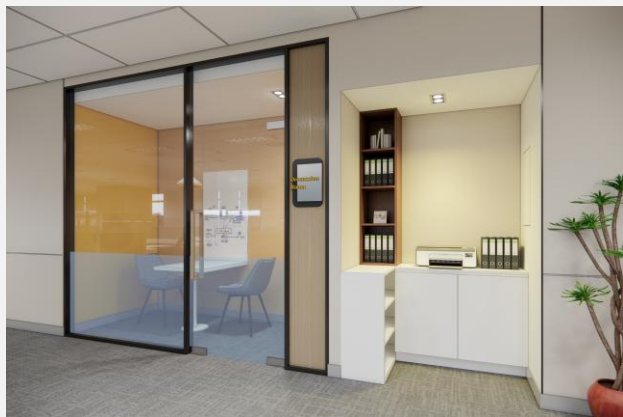
“To embody a modern, dynamic white–black–blue concept featuring upgraded waiting and meeting areas, a 60-seat boardroom with advanced AV integration, six meeting rooms including a studio, optimized open workstations for four departments, refreshed pantry spaces, and a creative brainstorming zone. Designed to create a sleek, energetic, and highly functional workplace environment.”



3D Rendering

- Reception & Waiting Area
- Workstation Area
- Meeting Rooms
- MD Room
- Board Room
- Social Media Room
- Theatre Room
- Wet Pantry
- Dry Pantry

PROJECTS SHOWCASE



3D Rendering

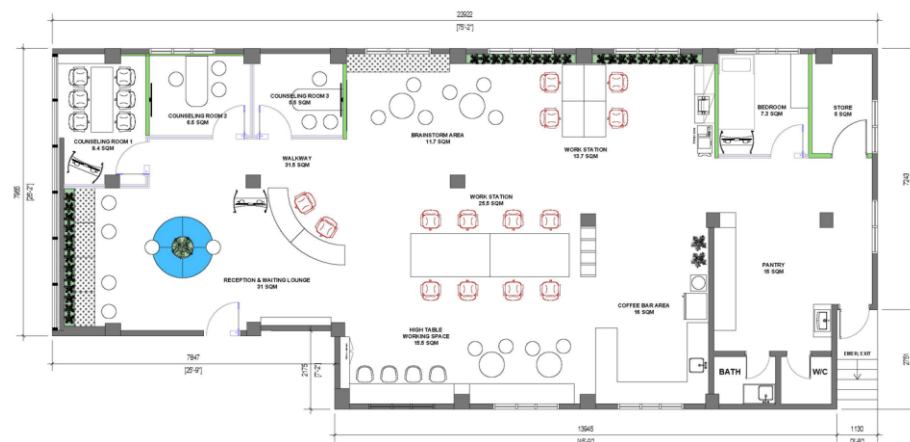
- Reception & Waiting Area
- Workstation Area
- Meeting Rooms
- MD Room
- Board Room
- Social Media Room
- Theatre Room
- Wet Pantry
- Dry Pantry



3D Rendering

- Reception & Waiting Area
- Workstation Area
- Meeting Rooms
- MD Room
- Board Room
- Social Media Room
- Theatre Room
- Wet Pantry
- Dry Pantry

4. PROJECTS SHOWCASE



Project Title

- Project Name - Elevate Education Office - Level 7
Location - San Chaung Township, Yangon.
Project Type - Office (Commercial Interior Design)
Size (sqft) - 3020 Sqft
Completion Year - 2025

PROJECTS SHOWCASE



Project Overview

“Elevate Education is a forward-thinking consultancy empowering Myanmar students to pursue higher education abroad, particularly in Thailand. The office interior is designed to be bold, creative, and engaging, appealing directly to a young, aspirational audience while incorporating the brand’s signature blue throughout the space. The layout balances functionality and experience, featuring efficient workstations, a welcoming waiting area, private consultation rooms, and a cozy coffee bar for breaks. Dedicated brainstorming zones and a relaxing staff lounge are thoughtfully integrated to support collaboration, creativity, and well-being.”

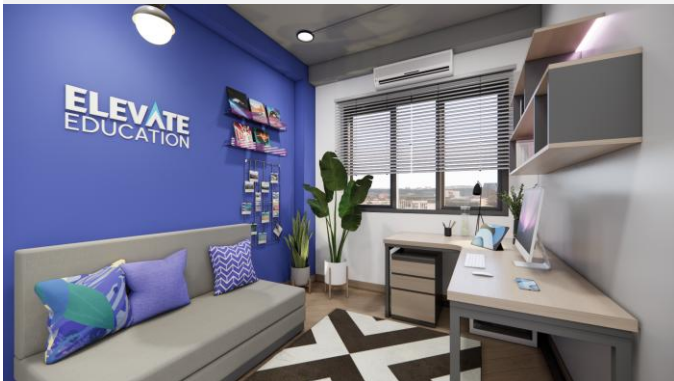


3D Rendering

- Reception & Waiting Area
- Workstation Area
- Consulting Rooms
- Brainstorming Area
- Meeting Rooms
- Coffee Bar and Pantry



PROJECTS SHOWCASE

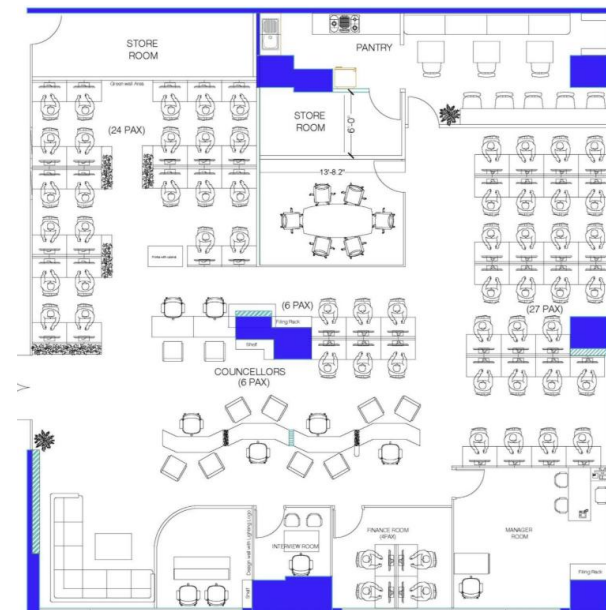


3D Rendering

- Reception & Waiting Area
- Workstation Area
- Consulting Rooms
- Brainstorming Area
- Meeting Rooms
- Coffee Bar and Pantry

PROJECTS SHOWCASE

4. PROJECTS SHOWCASE



Project Title

- Project Name - Expert Education Office
Location - Pyay Road, Red Hill Tower, 6th Floor, Yangon.
Project Type - Office (Commercial Interior Design)
Size (sqft) - 3000 Sqft
Completion Year - 2024

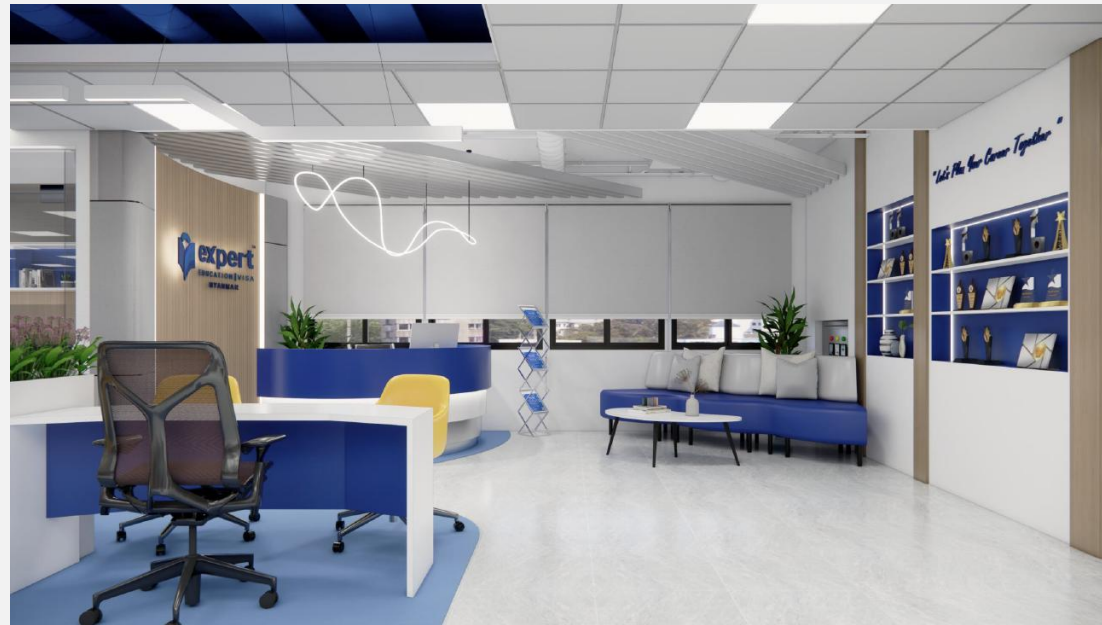
PROJECTS SHOWCASE



Project Overview

“ Expert Education and Visa Services (EEVS) is a leading education and migration consultancy with a global presence across 12 countries. The organization specializes in supporting students who aspire to study in Australia, offering comprehensive services ranging from academic counselling and institution selection to visa application assistance, as well as arrival support and settlement guidance in Australia.

For the EEVS office located at Red Hill Tower, Yangon, our interior design approach focused on optimizing workflow efficiency and prioritizing well-planned consultation spaces, as these are central to their operations. Given the office’s emphasis on student engagement, the design concept was developed to be energetic and bold, while maintaining a clean and uncluttered aesthetic. Rather than incorporating overly heavy design elements, we introduced creative and innovative features to achieve a modern, dynamic, and functional environment.



PROJECTS SHOWCASE

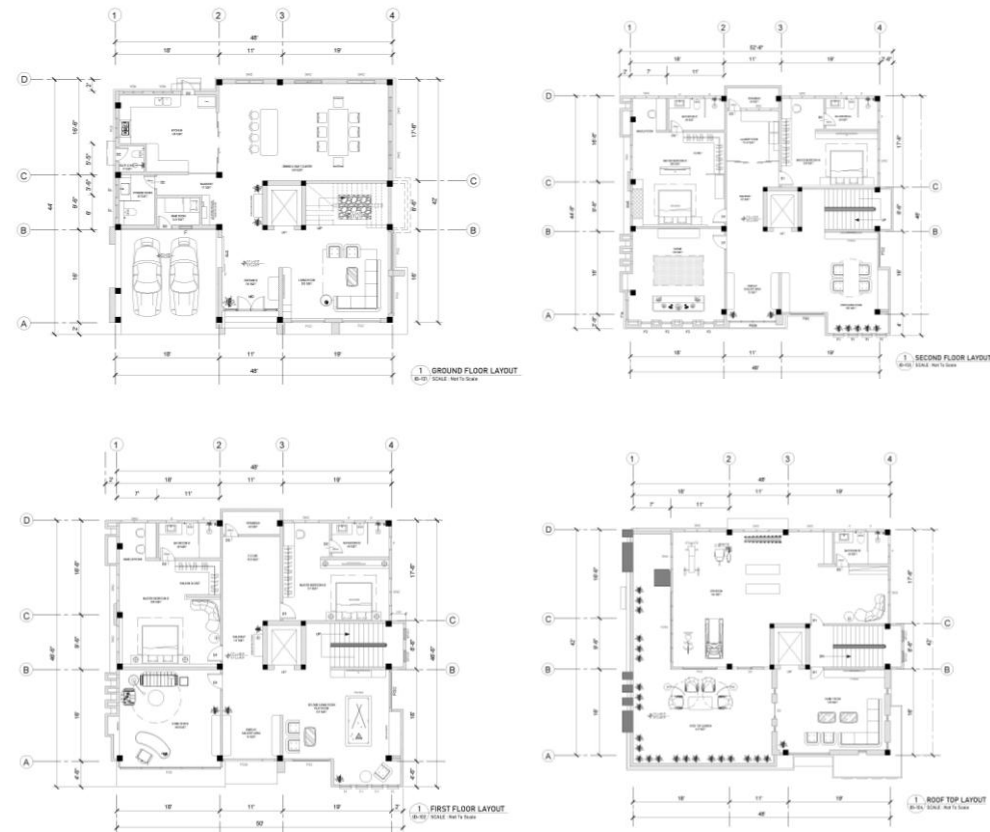


PROJECTS SHOWCASE



PROJECTS SHOWCASE

4. PROJECTS SHOWCASE



Project Title

- Project Name - 135K3 Thanlwin Residence
Location - Thanlwin street, Yangon.
Project Type - Three and Half Storey Residence
(Residential Interior Design)
Size (sqft) - Over 7000 Sqft
Completion Year - On Going

PROJECTS SHOWCASE



Project Overview

“This project spans over 7,000 square feet across three and a half storeys, featuring four master bedrooms and a variety of dedicated entertainment spaces, including a shrine room, home office, pool table area, whiskey lounge, and a spacious main living room on the ground floor, complemented by two medium-sized living rooms on the first and second floors. The design concept emphasizes a modern minimalist aesthetic with a refined black-and-white theme throughout. The entire interior design and build were executed by Kreations, with the client placing full trust in our team and entrusting us with complete responsibility for the project’s design and construction management.”



**Exterior Landscape
Design**

**PROJECTS
SHOWCASE**



Exterior Design

PROJECTS SHOWCASE



Interior Design

PROJECTS SHOWCASE



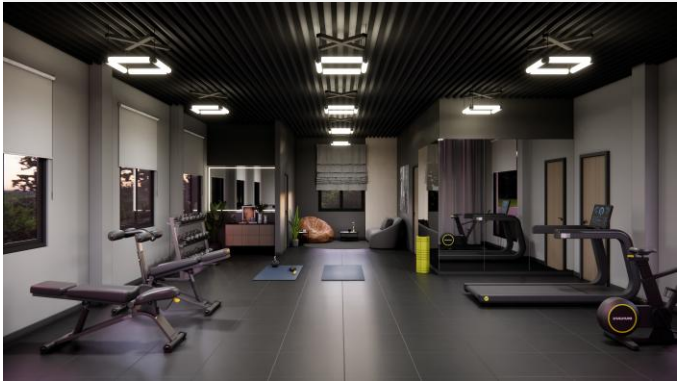
Interior Design

PROJECTS SHOWCASE



Interior Design

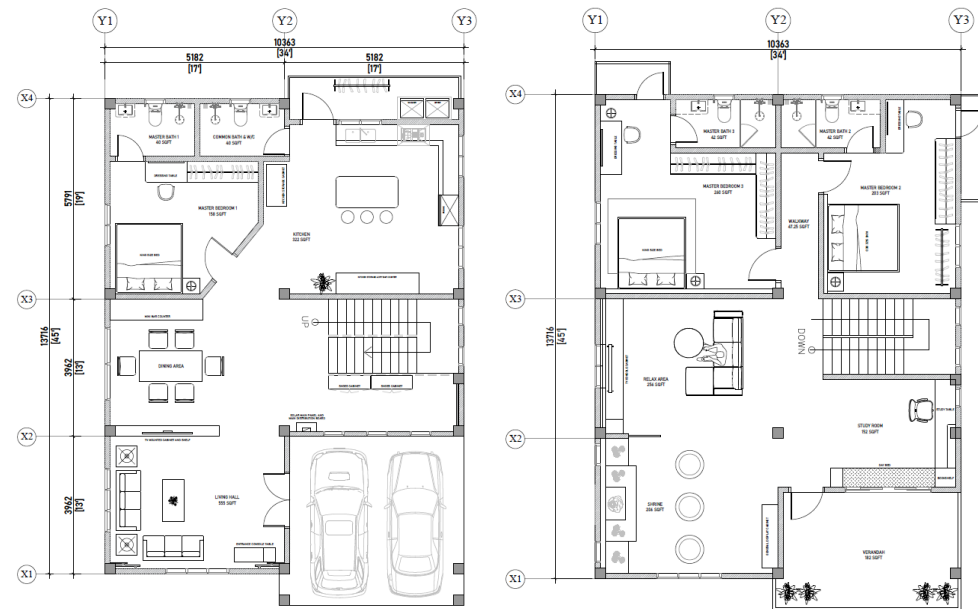
PROJECTS
SHOWCASE



Interior Design

PROJECTS SHOWCASE

4. PROJECTS SHOWCASE



Project Title

- Project Name - 1218 North Dagon Residence
Location - North Dagon, Yangon.
Project Type - Two-Storey Residence
(Residential Interior Design)
Size (sqft) - Over 3000 Sqft
Completion Year - 2024

PROJECTS SHOWCASE



Project Overview

“The project entails the design of a modern two-storey residence with a total built-up area exceeding 3,000 square feet. The home is thoughtfully conceived to accommodate the owners’ dynamic and demanding lifestyle, while seamlessly integrating their passion for golf. It will feature a range of luxurious yet highly functional spaces, combining timeless design principles with contemporary comforts and bespoke golf-inspired elements.

The occupants are a professional couple—both a businessman and businesswoman—who share a strong enthusiasm for golf. As busy professionals, their lifestyle revolves around balancing work commitments with their recreational pursuits, particularly the sport of golf.

A key design objective is to reflect the clients’ professional achievements alongside their personal interests. Dedicated spaces for displaying golf trophies and a customized cabinet for golf accessories are integral to the concept. The overall design approach emphasizes a harmonious blend of elegance and practicality, ensuring a refined living environment that delivers both comfort and style without compromise.



Exterior Design

PROJECTS SHOWCASE



Interior Design

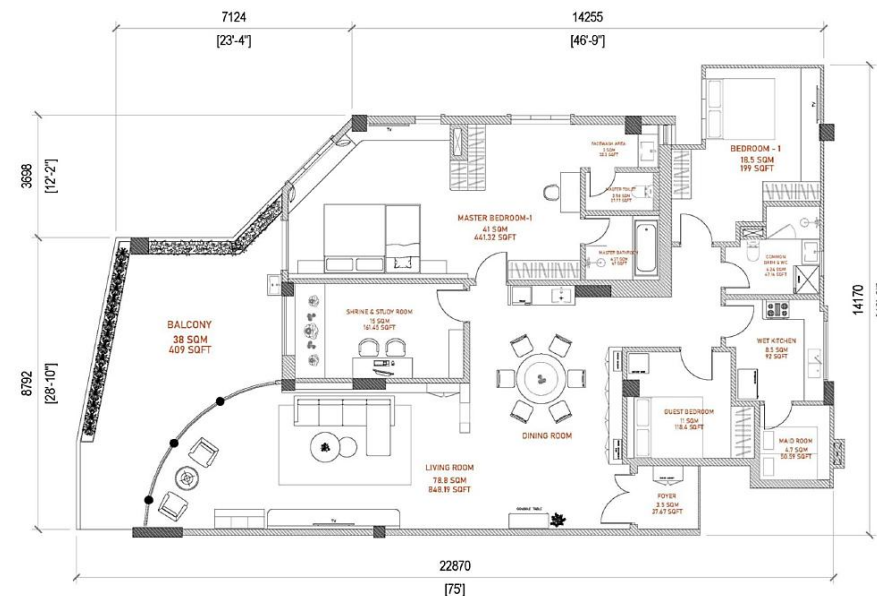
PROJECTS SHOWCASE



Interior Design

PROJECTS SHOWCASE

4. PROJECTS SHOWCASE



Project Title

- Project Name - Grand Golden View Condo
- Location - No. 390, Manawhari Street, Yangon.
- Project Type - Condominium (Residential Interior Design)
- Size (sqft) - 2700 Sqft
- Completion Year - 2025

PROJECTS SHOWCASE



Project Overview

“This project is located near the iconic Shwedagon Pagoda in the heart of Yangon, this residence reflects the homeowner’s vision of a refined gold-and-white palette, symbolizing elegance and purity. The design follows a minimalist, modern approach, thoughtfully planned for a family of four with two live-in maids. An open-plan living area with expansive glass walls frames sweeping views of the city, while a generous balcony offers a calm and romantic setting—especially in the evening, when Yangon’s skyline becomes soft, glowing, and serene.”



- Living Room



- Living Room

PROJECTS SHOWCASE



- Dining Hall



- Dining Hall

PROJECTS SHOWCASE



- Master Bedroom



- Vanity Counter

PROJECTS SHOWCASE



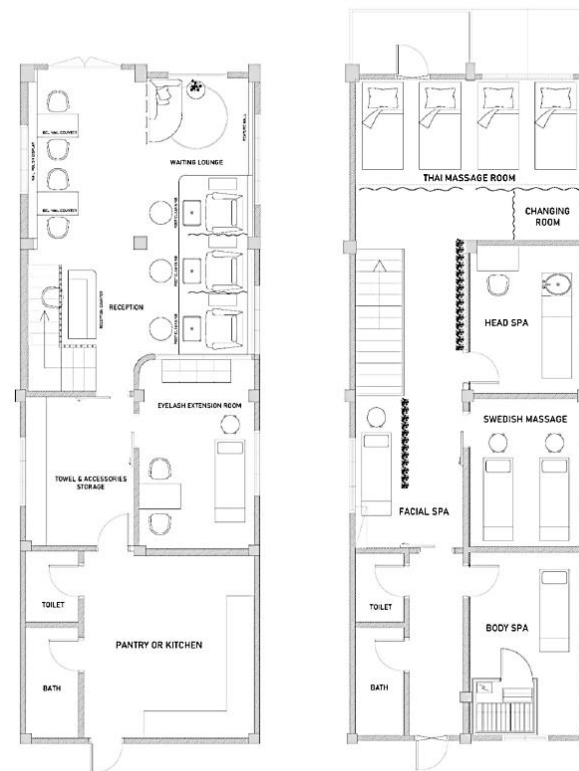
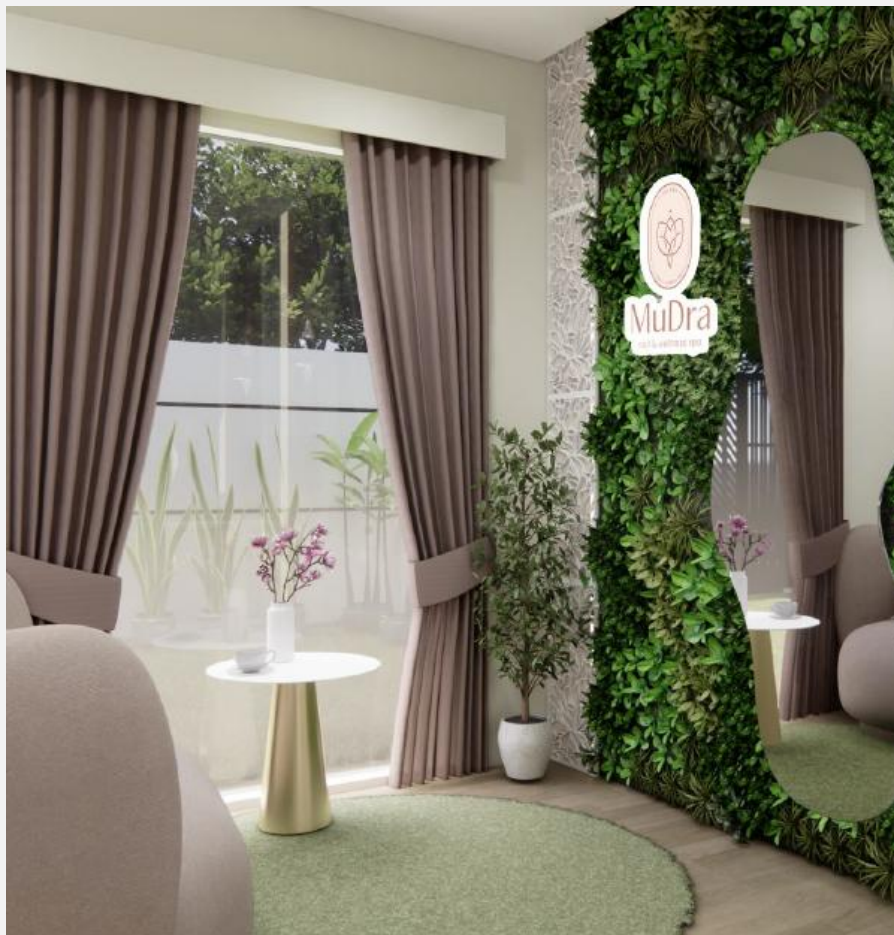
- Single Bedroom



- Common Toilet

PROJECTS SHOWCASE

4. PROJECTS SHOWCASE



Project Title

- Project Name - Mudra Nail & Wellness Spa
- Location - Byamaso Street, South Okkalapa Township.
- Project Type - Beauty Spa (Commercial Interior Design)
- Size (sqft) - 2000 Sqft
- Completion Year - 2025

PROJECTS SHOWCASE

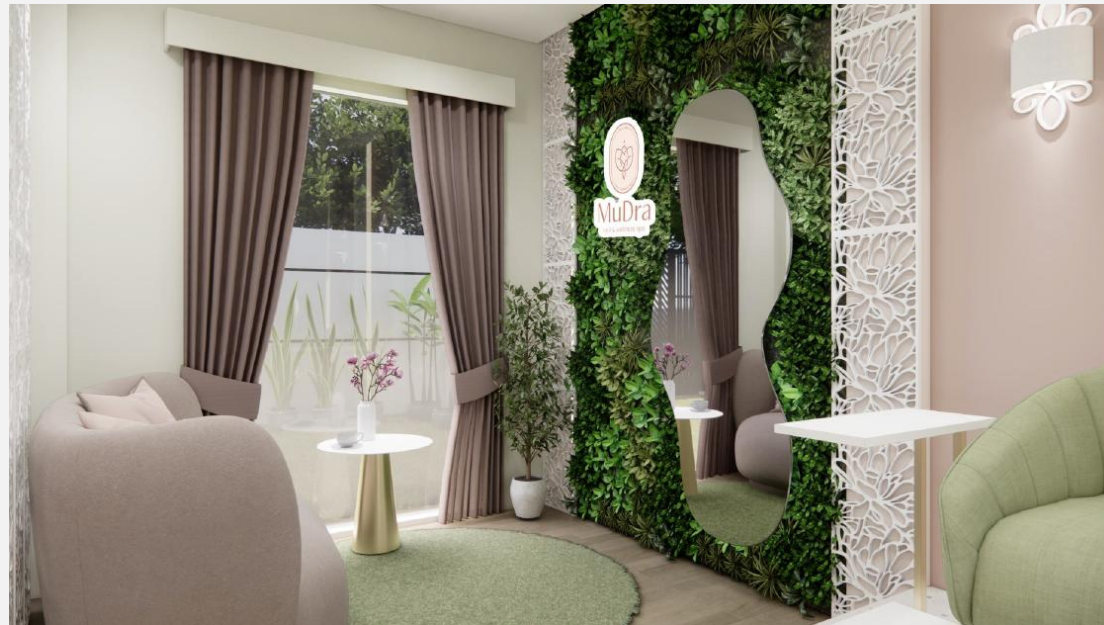


Project Overview

“The project creates a serene, functional, and luxurious wellness environment that enhances the client experience from arrival to treatment. Spaces are carefully zoned for relaxation, treatment, and service, ensuring smooth flow and privacy. A calm waiting lounge sets a tranquil tone, while dedicated areas—foot massage, Thai and Swedish rooms, body spa, and head spa—prioritize comfort, efficiency, and acoustic privacy. The design balances relaxation and functionality to deliver a holistic, rejuvenating spa experience.”



- Reception



- Waiting Area

PROJECTS SHOWCASE



- Nail Salon



- Foot Cleansing

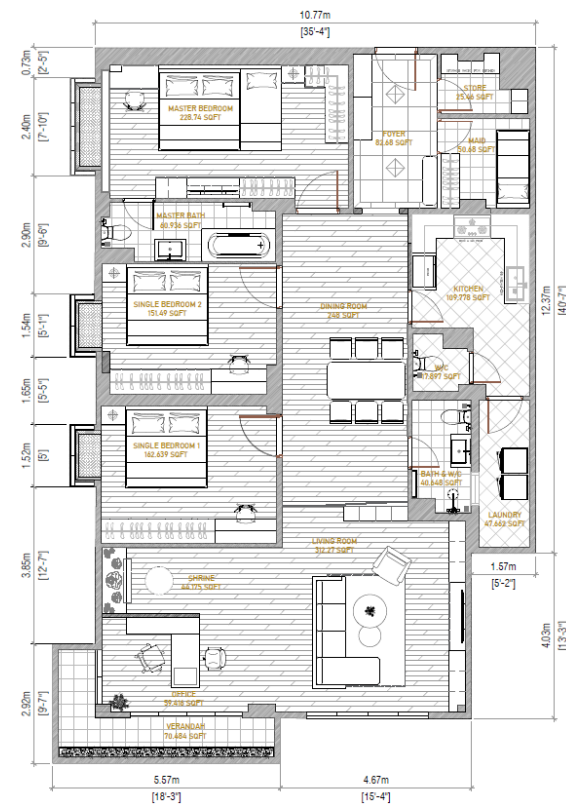
PROJECTS SHOWCASE



- Eyelashes Extension
- Massage Room
- Head Spa Room

PROJECTS SHOWCASE

4. PROJECTS SHOWCASE



Project Title

- Project Name - River View Point Condo
- Location - Alone Township, Yangon.
- Project Type - Condominium (Residential Interior Design)
- Size (sqft) - 1695 Sqft
- Completion Year - 2026

PROJECTS SHOWCASE



Project Overview

“Designed for a family of five with two live-in maids, this home reflects both warmth and individuality. The housewife envisioned a calm palette of soft beige complemented by genuine teak wood flooring throughout, creating a natural and inviting atmosphere. The husband, a gemstone dealer, is provided with a private office—an intimate and focused space of his own. Thoughtful planning ensures the teenage son enjoys his own sense of privacy, while the two daughters are given charming, playful bedrooms with a touch of elegance. Overall, the interior blends modern and Scandinavian influences, enriched with warm wood tones to evoke a cozy, refined living environment.”



- Foyer



- Entrance

PROJECTS SHOWCASE



- Walkway



- Dining Hall

PROJECTS SHOWCASE



- Living Room



- Living Room

PROJECTS SHOWCASE



- Master Bedroom



- Master Bedroom

PROJECTS SHOWCASE



- Son Bedroom



- Daughters Bedroom

PROJECTS SHOWCASE



- Kitchen



- Bath & W/C

PROJECTS SHOWCASE

2. TECHNICAL SECTION

Our Technical Drawing Services

At Kreations, we deliver:

- A mood board and design references following the initial client meeting, establishing the overall vision and direction.
- Zoning plans and preliminary furniture layouts to define spatial organization.
- Detailed 3D visualizations to bring the concept to life once the layout is approved
- Comprehensive technical and furniture drawings for accurate execution.

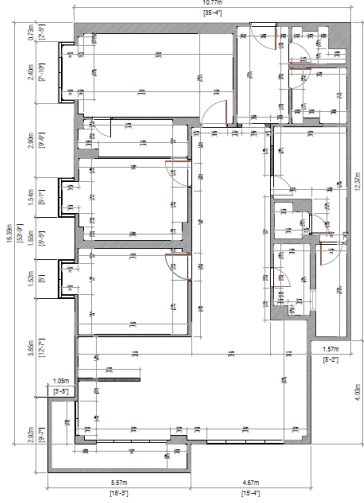
Sample technical drawings are presented on the following pages.



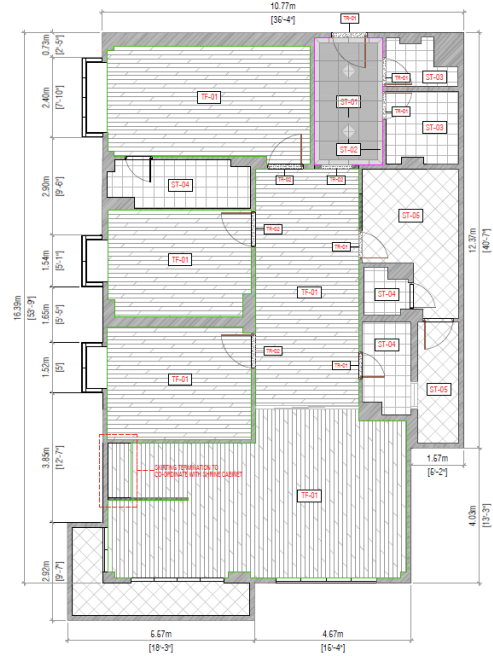
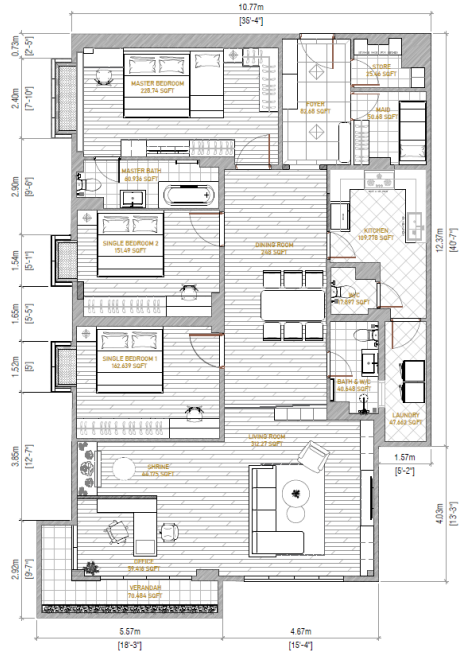
3D Mock-Up Room Plan Views



Construction Layout Drawings



1 FURNITURE LAYOUT PLAN
 (ID-00) SCALE: Not To Scale

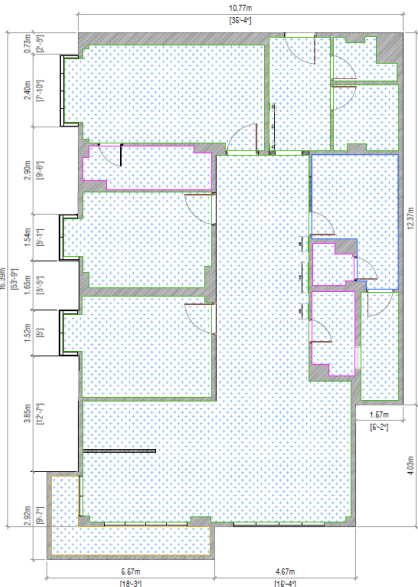


FLOOR FINISHES LEGEND	
CODE	DESCRIPTION
[F-01]	600 x 600 (24" x 24") PORCELAIN TILES (REFER TO FINISHES SCHEDULE)
[F-02]	600 x 600 (24" x 24") PORCELAIN TILES (REFER TO FINISHES SCHEDULE)
[F-03]	300 x 300 (12" x 12") TILES (REFER TO FINISHES SCHEDULE)
[F-04]	300 x 300 (12" x 12") TILES (REFER TO FINISHES SCHEDULE)
[F-05]	300 x 300 (12" x 12") TILES (REFER TO FINISHES SCHEDULE)
[F-06]	3:1 (3:1) TEAK SOLID WOOD PARQUET FLOORING IN SELECTED DARK STAIN FINISH (REFER TO FINISHES SCHEDULE)

THRESHOLD LEGEND	
CODE	DESCRIPTION
[T-01]	18 ~ 20mm THK. ONE PIECE GRANITE THRESHOLD IN POLISH FINISH
[T-02]	18mm THK. ONE PIECE TEAK SOLID WOOD THRESHOLD TO MATCH TEAK SOLID WOOD PARQUET FLOOR FINISH

SKIRTING LEGEND		
CODE	SYMBOL	DESCRIPTION
[S-01]	[Symbol]	200mm (8") HIGH (32 THK.) 18MM HARDWOOD THICKER SKIRTING IN SELECTED COLOR SPRAY PAINT FINISH (REFER TO TECHNICAL SPECIFICATIONS)
[S-02]	[Symbol]	100mm (4") TILE SKIRTING TO MATCH WITH FLOOR TILE (REFER TO TECHNICAL SPECIFICATIONS)

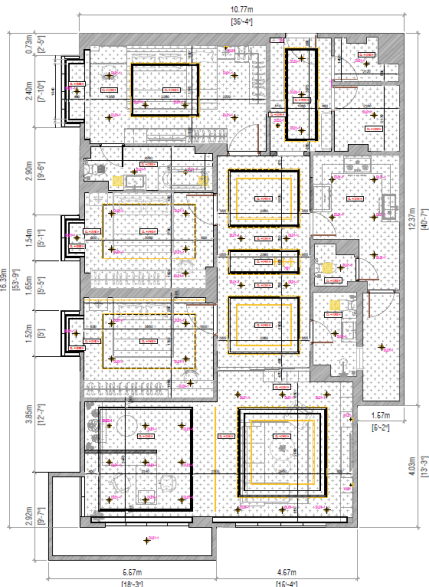
1 FLOOR FINISHES PLAN
 (ID-20) SCALE: Not To Scale



PAINTING LEGEND		
CODE	SYMBOL	DESCRIPTION
[P-01]	[Symbol]	SELECTED PAINT FINISHES (FOR INTERIOR)
[P-02]	[Symbol]	SELECTED PAINT FINISHES (FOR EXTERIOR)
[P-03]	[Symbol]	300 x 300 (12" x 12") CERAMIC TILES (TO BE SELECTED BY CLIENT)
[P-04]	[Symbol]	300 x 300 (12" x 12") CERAMIC TILES (TO BE SELECTED BY CLIENT) HEIGHT - 1500 MM A.F.F.

CEILING FINISHES	
SYMBOL	DESCRIPTION
[Symbol]	CEILING PAINT FINISHES
[Symbol]	PS WALL PANEL, 6' X 8' SIZE (P2111)

1 FLOOR FINISHES PLAN
 (ID-20) SCALE: Not To Scale

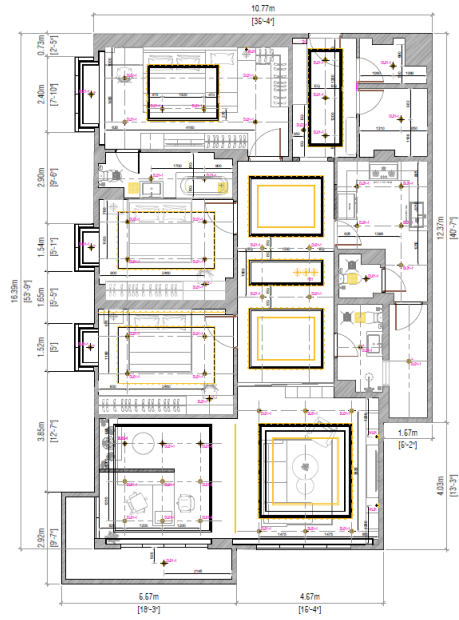


GENERAL LIGHTING LEGEND (TO BE COORDINATED BY MAE ENGINEER)	
LEGEND SYMBOL	DESCRIPTIONS
[Symbol]	RECESSED DOWNLIGHT
[Symbol]	SPOT LIGHT @ POWER
[Symbol]	DECORATIVE WALL ATTACHED LAMP (1500 MM A.F.F. C.C.)
[Symbol]	DECORATIVE HANGING LIGHT (PROVISION ONLY)
[Symbol]	LED LINEAR LIGHT FOR COVE LIGHTING
[Symbol]	LED PROFILE LIGHT FOR CEILING
[Symbol]	SPILT TYPE ARCHON
[Symbol]	STAND ARCHON
[Symbol]	RETRACTED TRAY
[Symbol]	ACCESS PANEL (SEE LOCATION TO REFER TO MEP DWG)

1 CEILING FINISHED PLAN
 (ID-30) SCALE: Not To Scale

TECHNICAL SECTION

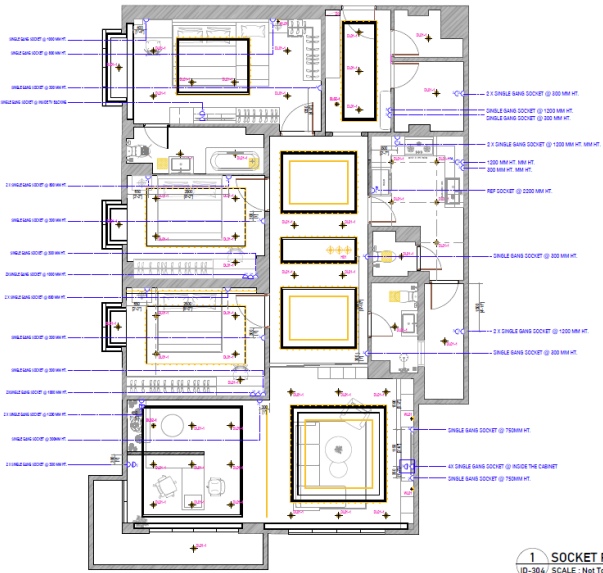
Construction Layout Drawings



GENERAL LIGHTING LEGEND (TO BE COORDINATED BY M&E ENGINEER)

LEGEND SYMBOL	DESCRIPTIONS	SYMBOL	DESCRIPTIONS
DLDR-1	RECESSED DOWNLIGHT	SPUT TYPE ARCON	SPUT TYPE ARCON
DLDR-2	SPOT LIGHT @ FLOOR	CHD ARCON	CHD ARCON
WALL	DECORATIVE WALL ATTACHED LAMP (1800 MM AMP C.C.)	EXHAUST FAN	EXHAUST FAN
HWS	DECORATIVE HANGING LIGHT (PROVISION ONLY)	ACCESS PANEL (SEE A LOCATION TO REFER TO MEP DWG)	ACCESS PANEL (SEE A LOCATION TO REFER TO MEP DWG)
LEDW1	LED LINEAR LIGHT FOR COVER LIGHTING		
LEDW2	LED PROFILE LIGHT FOR CEILING		

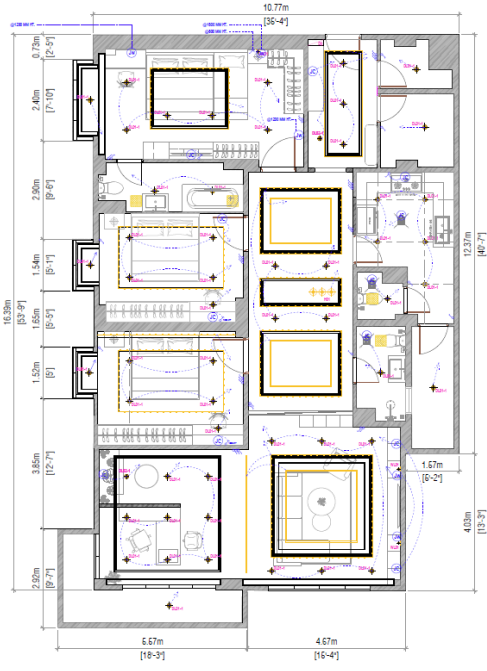
1 LIGHTING DIMENSION
(D-302) SCALE: Not To Scale



NOTE:

- THE ELECTRICAL SOCKET HEIGHTS SPECIFIED IN THIS DRAWING TO BE COORDINATED WITH BUILT-IN FITMENT & FIXTURES AND TO BE FINALIZED UPON CONFIRMATION OF THE LOCATIONS OF CASE BY CLIENT.
- THE INDICATIVE SOCKET HEIGHTS SPECIFIED IN DRAWING TO BE MEASURED FROM FFL (FINISHED FLOOR LEVEL) TO THE CENTRE LINE OF SOCKET OUTLETS.
- THE SMARTER ELECTRICAL LAYOUT PLAN IS ONLY FOR REFERENCE & COORDINATION PURPOSE IN RELATION TO L/D LAYOUT & FITMENT POSITION & NOT FOR CONSTRUCTION USE. THE CONTRACTOR TO USE M&E DRAWING FOR CONSTRUCTION.
- AC SOCKET OUTLET TO BE COORDINATED WITH AC HEIGHT.

1 SOCKET PLAN
(D-304) SCALE: Not To Scale



NOTE:

- THE ELECTRICAL SOCKET HEIGHTS SPECIFIED IN THE DRAWING TO BE COORDINATED WITH BUILT-IN FITMENT & FIXTURES AND TO BE FINALIZED UPON CONFIRMATION OF THE LOCATIONS OF CASE BY CLIENT.
- THE INDICATIVE SOCKET HEIGHTS SPECIFIED IN DRAWING TO BE MEASURED FROM FFL (FINISHED FLOOR LEVEL) TO THE CENTRE LINE OF SOCKET OUTLETS.
- THE SMARTER ELECTRICAL LAYOUT PLAN IS ONLY FOR REFERENCE & COORDINATION PURPOSE IN RELATION TO L/D LAYOUT & FITMENT POSITION & NOT FOR CONSTRUCTION USE. THE CONTRACTOR TO USE M&E DRAWING FOR CONSTRUCTION.
- AC SOCKET OUTLET TO BE COORDINATED WITH AC HEIGHT.

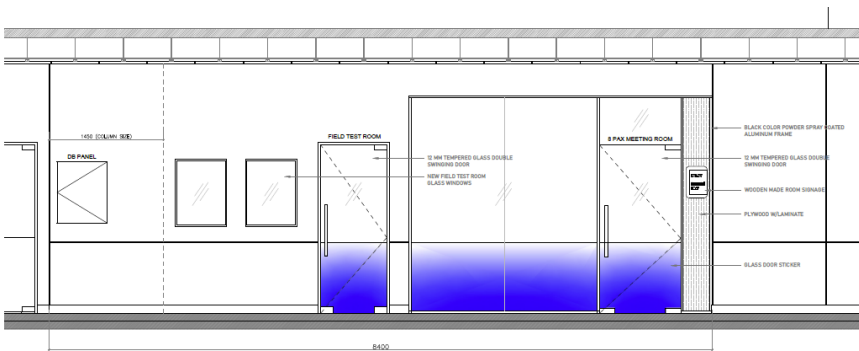
ELECTRICAL LEGEND

SYMBOL	DESCRIPTIONS
AC	SHOULD GIVE MULTI PHASED SOCKET OUTPUT AS INDICATED
AC	SHOULD GIVE MULTI PHASED SOCKET OUTPUT FOR AC @ 240V MM HT
AC	REFRIGERATOR OUTPUT @ 300 MM HT AS INDICATED
AC	SHOULD GIVE SOCKET WITH USB OUTPUT AS INDICATED
AC	TEMPERATURE CONTROL AS INDICATED
AC	SHOULD GIVE MULTI PHASED SOCKET OUTPUT (WEATHER PROOF)
AC	JUNCTION BOX FROM CEILING IN SOCKET OUTPUT
AC	JUNCTION BOX FROM WALL IN SOCKET OUTPUT
AC	TEMPERATURE CONTROL AS INDICATED
AC	1 GANG 1 WAY SWITCH (SWITCH AT 1800 MM AMP C.C. FLOOR INDICATED)
AC	2 GANG 1 WAY SWITCH (SWITCH AT 1800 MM AMP C.C. FLOOR INDICATED)
AC	3 GANG 1 WAY SWITCH (SWITCH AT 1800 MM AMP C.C. FLOOR INDICATED)
AC	1 GANG 2 WAY SWITCH (SWITCH AT 1800 MM AMP C.C. FLOOR INDICATED)
AC	2 GANG 2 WAY SWITCH (SWITCH AT 1800 MM AMP C.C. FLOOR INDICATED)
AC	MINERISCOPIC CONTROL PANEL FOR CIGARETTE TIRE
AC	AC INDICATE FOR SPUT TYPE

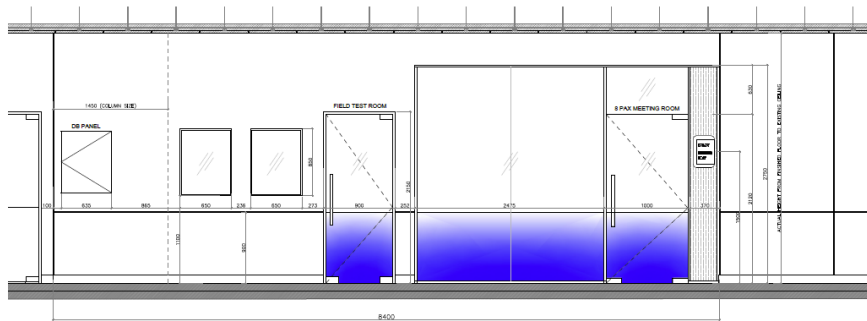
1 LIGHTING LOOPING
(D-303) SCALE: Not To Scale

TECHNICAL SECTION

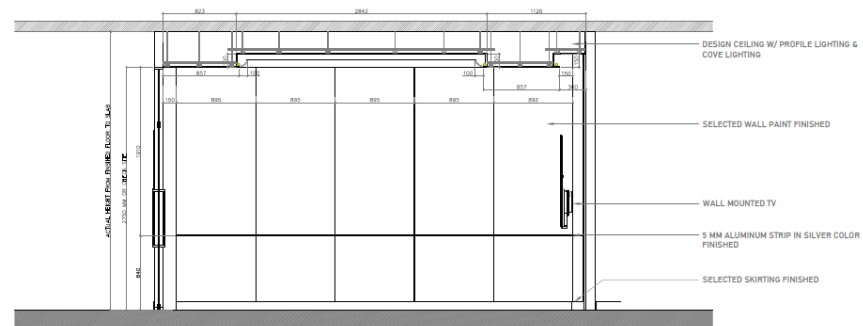
Elevation Drawings



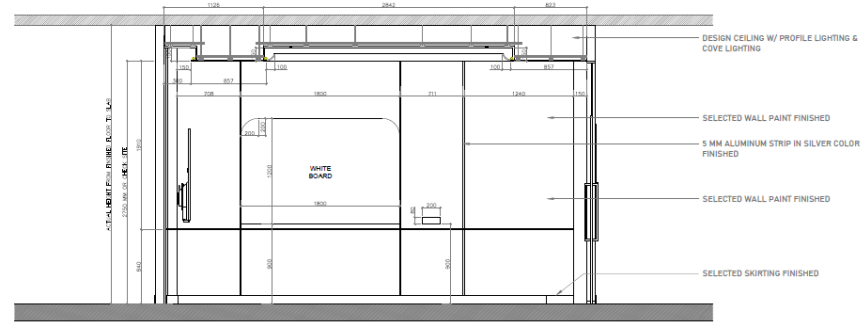
2 WORKSTATION WALKWAY ELEVATION
I-204 / ELEVATION



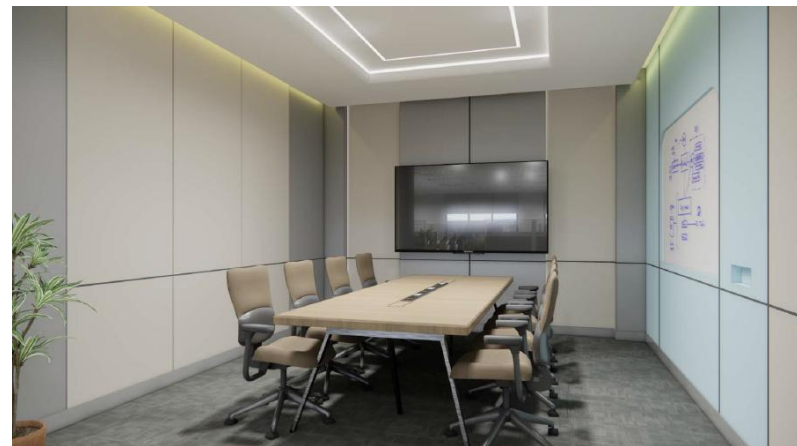
1 WORKSTATION WALKWAY ELEVATION
I-204 / ELEVATION



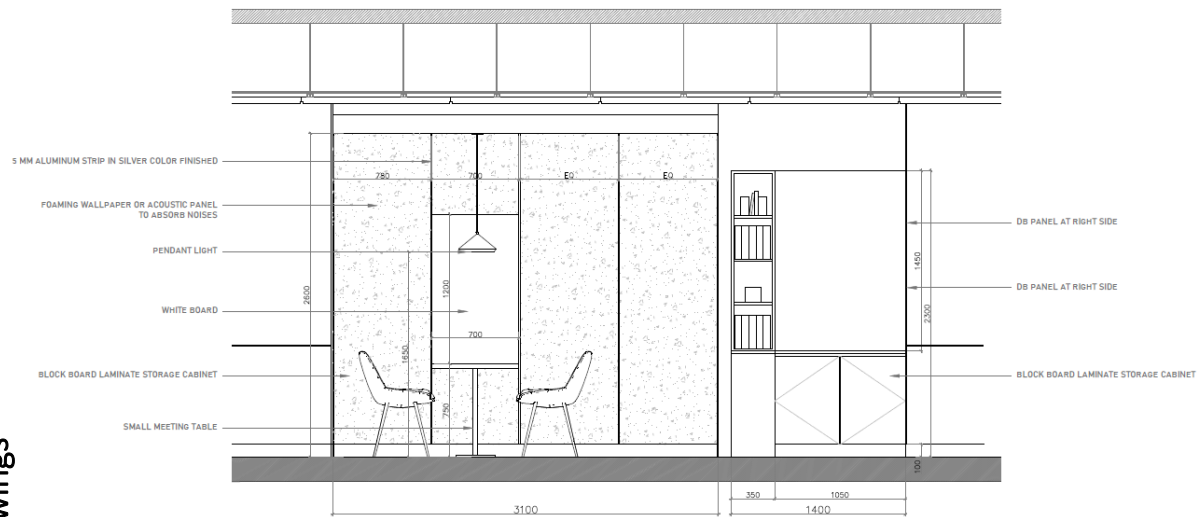
1 8 PAX MEETING ROOM ELEVATION B
I-201B / ELEVATION B-B



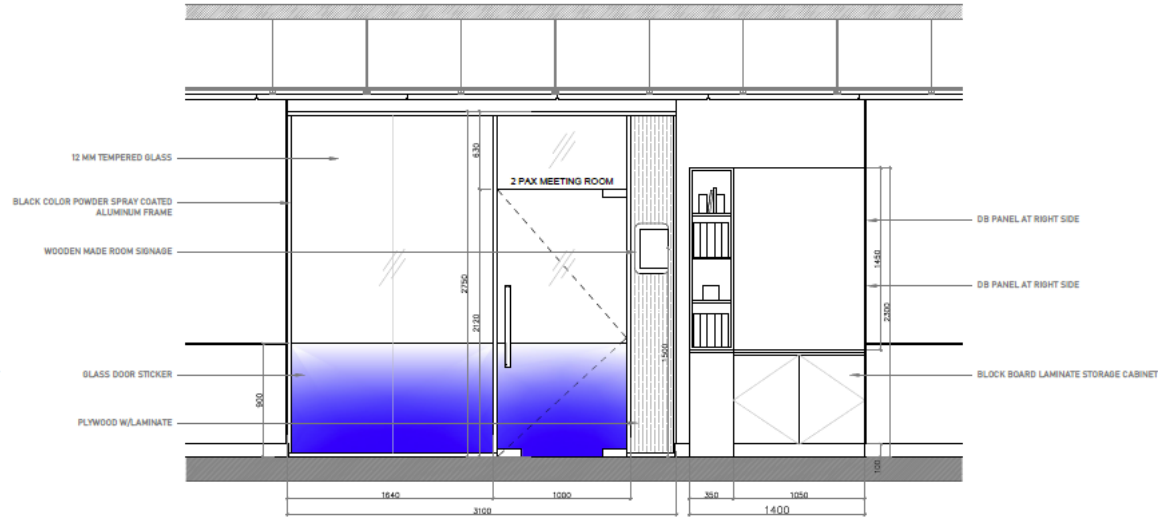
1 8 PAX MEETING ROOM ELEVATION C
I-201C / ELEVATION C-C



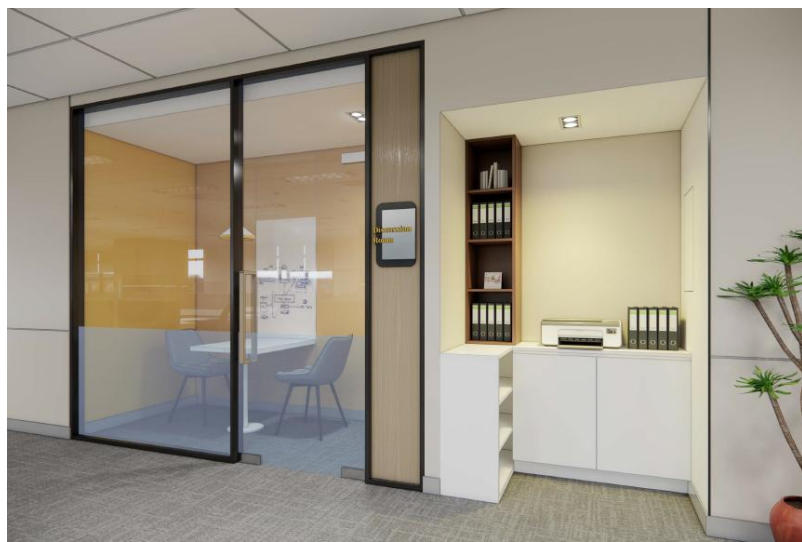
Elevation Drawings



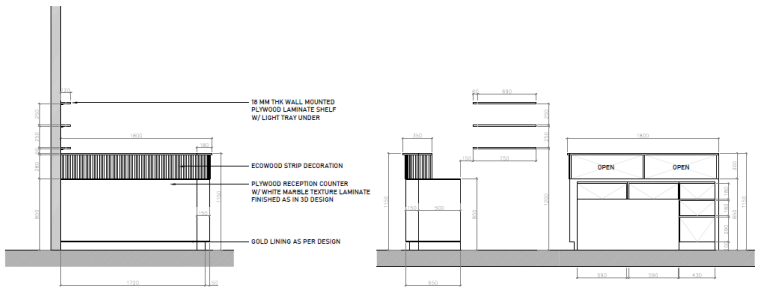
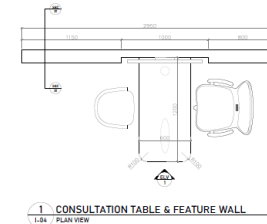
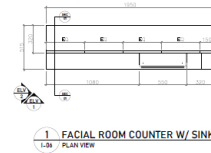
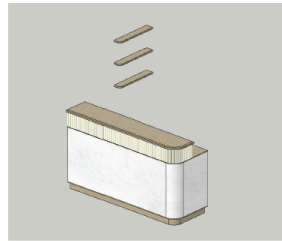
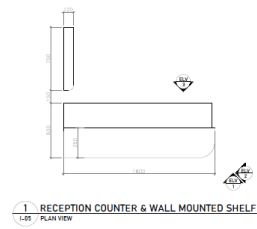
2 2 PAX MEETING & STORAGE SPACE ELEVATION A
1-205 / OPEN ELEVATION



3 2 PAX MEETING & STORAGE SPACE ELEVATION A
1-205 / CLOSED ELEVATION

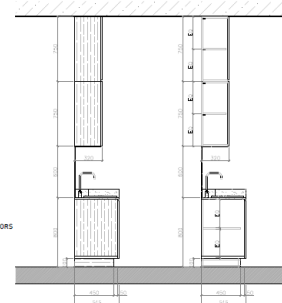
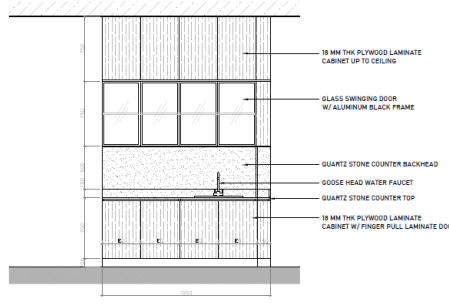


Detailed Drawings



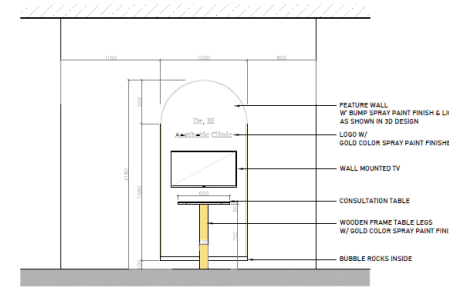
3
1-95
ELEVATION 2

4
1-95
ELEVATION 2

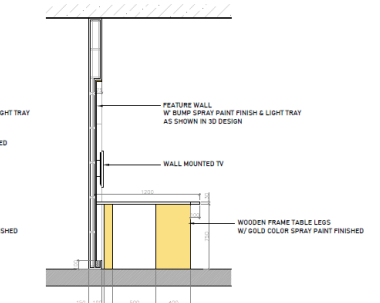


3
1-96
ELEVATION 2

4
1-96
SECTION 1-1



2
1-94
ELEVATION 1



3
1-94
SECTION 1-1

Many other projects by Kreations..

Dr.Ei Aesthetic Clinic



Infinity Education Center



ASE Education Booth @MMP



Thuwanna Football Stadium



Diamond Inya Condo



Kabar Aye Residence



Pin Lon Residence



Shwe Kainnaya Hosuing



Parami Valley Residence



Mother Land Condo



Myat Shwe Sin Jewelry Shop



And many other projects...





Thank You

Email - matt@kreationssid.com
- design@kreationssid.com

Phone - +95 977 722 9789
- +95 997 773 3333

Address - No.1043, Room (5B), Ward (4), Thu Mingalar Road,
South Okkalapa Township, Yangon.